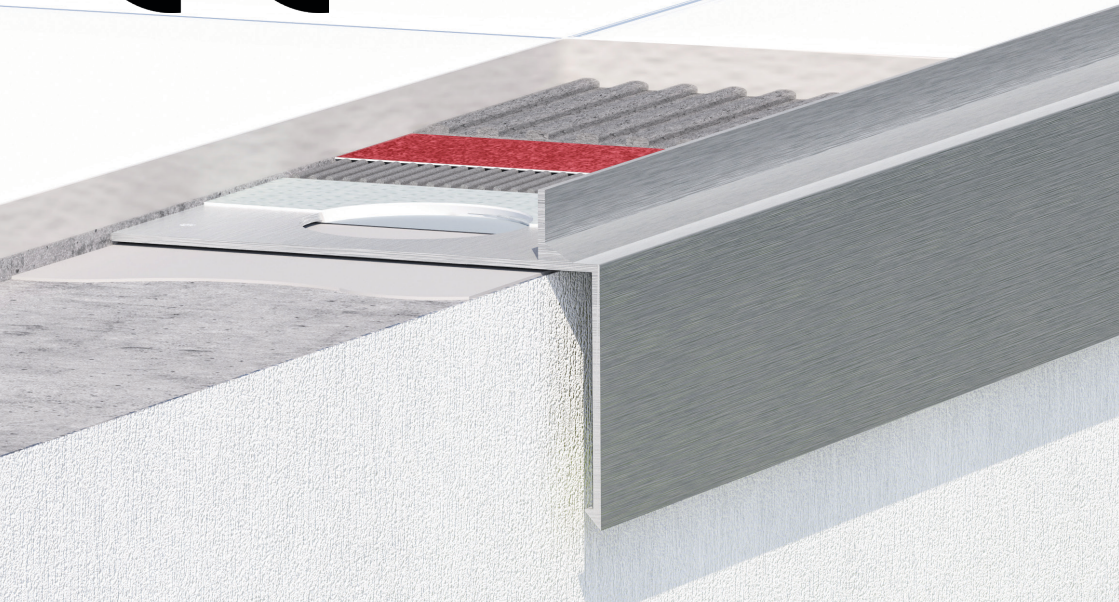




All Celox balcony profiles have been provided with European Technical Assessment (ETA) 21/0321. Balcony profiles designated as a construction product will receive the CE marking.



The CE marking adds value because all countries are obliged to allow the sale of construction products that carry it. This means that public authorities are not allowed to require additional markings, attesting certificates or any other further testing whatsoever. Therefore, our profiles can be sold with the same documents in any country within Europe's single market. Together with the declaration of performance, it also helps our customers verify the product's features. The CE marking means that the performance of the products we sell are the same as the performance in our declaration and they have been obtained from the correct European technical specification.